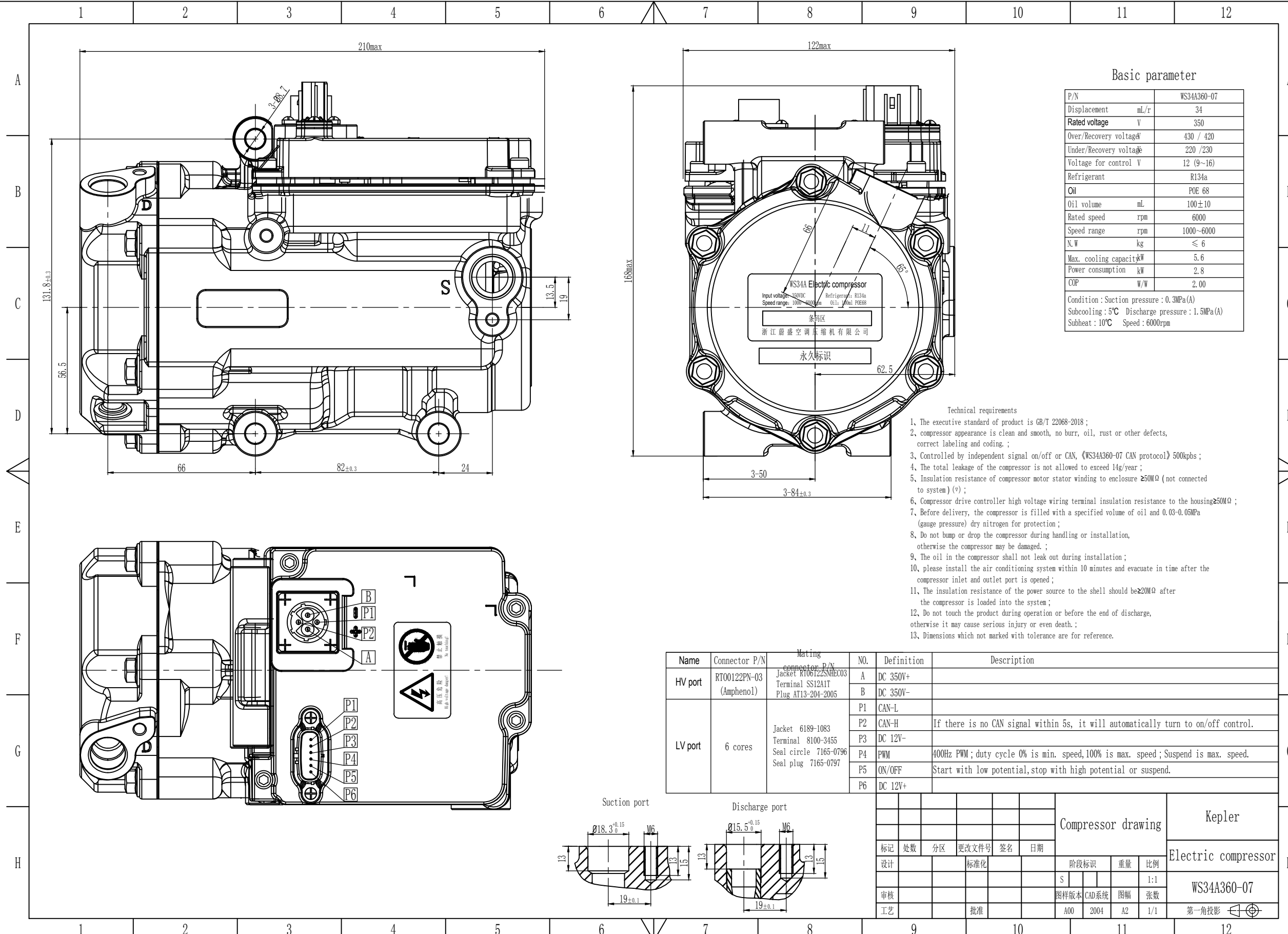


实际波特 率500



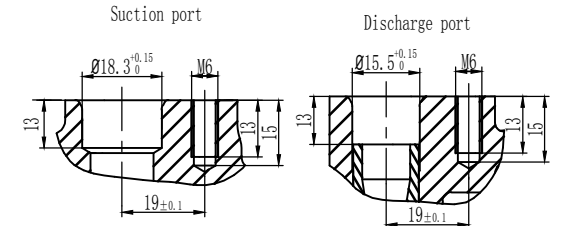
Basic parameter

P/N	WS34A360-07	
Displacement	ml/r	34
Rated voltage	V	350
Over/Recovery voltage	V	430 / 420
Under/Recovery voltage	V	220 / 230
Voltage for control	V	12 (9~16)
Refrigerant	R134a	
Oil	POE 68	
Oil volume	ml	100±10
Rated speed	rpm	6000
Speed range	rpm	1000~6000
N.W	kg	≤ 6
Max. cooling capacity	kW	5.6
Power consumption	kW	2.8
COP	W/W	2.00

Condition : Suction pressure : 0.3MPa(A)
Subcooling : 5°C Discharge pressure : 1.5MPa(A)
Subheat : 10°C Speed : 6000rpm

- Technical requirements
- The executive standard of product is GB/T 22068-2018 ;
 - compressor appearance is clean and smooth, no burr, oil, rust or other defects, correct labeling and coding ;
 - Controlled by independent signal on/off or CAN, (WS34A360-07 CAN protocol) 500kpbs ;
 - The total leakage of the compressor is not allowed to exceed 14g/year ;
 - Insulation resistance of compressor motor stator winding to enclosure $\geq 50M\Omega$ (not connected to system) (V) ;
 - Compressor drive controller high voltage wiring terminal insulation resistance to the housing $\geq 50M\Omega$;
 - Before delivery, the compressor is filled with a specified volume of oil and 0.03-0.05MPa (gauge pressure) dry nitrogen for protection ;
 - Do not bump or drop the compressor during handling or installation, otherwise the compressor may be damaged ;
 - The oil in the compressor shall not leak out during installation ;
 - please install the air conditioning system within 10 minutes and evacuate in time after the compressor inlet and outlet port is opened ;
 - The insulation resistance of the power source to the shell should be $\geq 20M\Omega$ after the compressor is loaded into the system ;
 - Do not touch the product during operation or before the end of discharge, otherwise it may cause serious injury or even death ;
 - Dimensions which not marked with tolerance are for reference.

Name	Connector P/N	Mating connector P/N	NO.	Definition	Description
HV port	RT00122PN-03 (Amphenol)	Jacket RT06122SNHC03 Terminal SS12A1T Plug AT13-204-2005	A	DC 350V+	
			B	DC 350V-	
LV port	6 cores	Jacket 6189-1083 Terminal 8100-3455 Seal circle 7165-0796 Seal plug 7165-0797	P1	CAN-L	
			P2	CAN-H	If there is no CAN signal within 5s, it will automatically turn to on/off control.
			P3	DC 12V-	
			P4	PWM	400Hz PWM ; duty cycle 0% is min. speed, 100% is max. speed ; Suspend is max. speed.
			P5	ON/OFF	Start with low potential, stop with high potential or suspend.
			P6	DC 12V+	



Compressor drawing					Kepler	
Electric compressor					WS34A360-07	
标记	处数	分区	更改文件号	签名	日期	
设计			标准化			阶段标识 重量 比例
审核			图样版本	CAD系统	图幅	张数
工艺			批准	A00	2004	A2 1/1